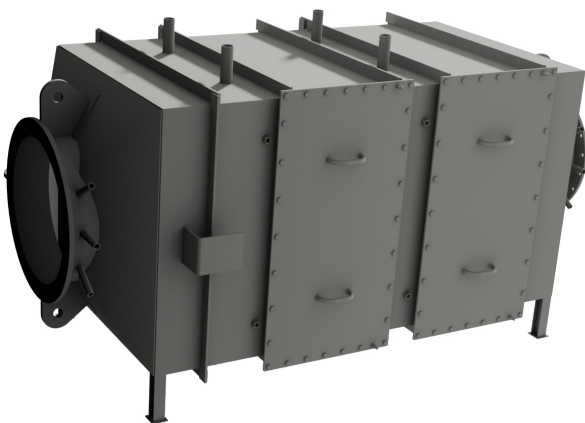




IMO Tier III solutions

To comply with the IMO Tier III regulations, an average NO_x reduction of 75% is needed compared to the IMO Tier II regulations. To meet this reduction, an after-treatment system is needed. Mitsubishi Marine Engines and Generator Sets can now be equipped with a Selective Catalyst Reduction (SCR) system. An SCR system is a system that reduces NO_x emissions from the engine exhaust gases.



ADVANTAGES

- Complying with IMO Tier III regulations
- Minimize environmental impact (NO_x)
- Engine and system certified according to scheme A
- Reliable system

APPLICATIONS

- Fishing vessels
- Tugboats
- Ferries
- Offshore
- Dredging
- Tankers
- Coasters

Ratings | IMO Tier III compliant

For other engines and ratings, please contact us.

		Provider	Mitsubishi SCR system	kW	bhp	rpm	Rating ¹ / Hz
Propulsion	S6R2-T2MPTK	Emigreen	-	480	644	1350	UCD
	S6R2-T2MPTAW3M	Emigreen	-	691	927	1406	HD
	S12A2-MPTAW	Emigreen	-	701	940	1940	UCD
	S12A2-T2MPTAW2	Mitsubishi	SCR25	727	975	1800	UCD
	S12R-MPTAW	Emigreen	-	940	1261	1600	UCD
	S6U-MPTK	Emigreen	-	1007	1350	1060	HD - Medium speed
	S8U-MPTK	Emigreen	-	1343	1801	1060	HD - Medium speed
Diesel-electric propulsion / Auxiliary generator	S6A3-T2MPTAW	Emigreen	-	450	603	1500	50
	S6R-MPTAW	Mitsubishi	SCR25	545	731	1500	50
	S6R-MPTAW (DEP)	Mitsubishi	SCR25	577	774	1800	60
	S6R-MPTAW (AUX)	Mitsubishi	SCR25	635	852	1800	60
	S6R2-T2MPTK	Mitsubishi	SCR25	640	858	1500	50
	S6R2-T2MPTAW3	Mitsubishi or Emigreen	SCR25	610	818	1200	60
	S12A2-MPTAW	Mitsubishi	SCR25	709	951	1500	50
	S12A2-MPTAW (DEP)	Mitsubishi or Emigreen	SCR25	752	1008	1800	60
	S12A2-MPTAW (AUX)	Mitsubishi or Emigreen	SCR25	828	1110	1800	60
	S12R-MPTAW	Mitsubishi	SCR25	840	1126	1200	60
	S12R-MPTAW	Mitsubishi or Emigreen	SCR36	1120	1502	1500	50
	S12R-MPTAW (DEP)	Mitsubishi or Emigreen	SCR36	1154	1548	1800	60
	S12R-MPTAW (AUX)	Mitsubishi or Emigreen	SCR36	1270	1703	1800	60
	S16R-MPTAW	Mitsubishi	SCR25	1120	1502	1200	60
	S16R-MPTAW	Mitsubishi or Emigreen	SCR49	1500	2012	1500	50
	S16R-MPTAW (DEP)	Mitsubishi or Emigreen	SCR49	1536	2060	1800	60
	S16R-MPTAW (AUX)	Mitsubishi or Emigreen	SCR49	1690	2266	1800	60
	S16R2-T2MPTAW	Mitsubishi	SCR49	1568	2103	1200	60
	S16R2-T2MPTAW	Mitsubishi	SCR49	1960	2628	1500	50

¹ For rating definitions, please see our website. - For other engines or ratings, please contact us.

There are two SCR system providers for Mitsubishi Marine Engines and Generator Sets that we recommend.

MITSUBISHI

We have developed our own SCR system solution in-house, in close collaboration with an experienced third party SCR provider. The system was chosen for its compatibility with the Mitsubishi Marine Engine lineup, creating a common system layout, which ensures ease of installation and maintenance and commonality in parts. The design and settings have been fully optimized for our specific engines and operations, comply with the Mitsubishi Heavy Industries Engine and Turbocharger Ltd. Japan standards and meet the environmental regulations of IMO Tier III. Next to this our systems have a type approval by a recognized classification society. As the lineup is based on our IMO Tier II engines, it is possible to switch off the SCR system outside of the emission control areas to make the operations more economical.

You purchase the whole package of the Mitsubishi Marine Engine and SCR system from one of our official sales and service dealers.

EMIGREEN

Emigreen, part of the August Storm Group / Koedood Marine Group, specialises in innovative and sustainable integrated solutions that effectively reduce exhaust emissions produced by marine diesel engines. They have tested and developed several SCR systems for the Mitsubishi Marine Engine lineup. The SCR system from Emigreen also functions as a 35 dBA silence, saving space over a separate silencer installation.

We recommend these systems under the Mitsubishi & Partner concept; innovative solutions, created by our partners, powered by Mitsubishi. The Mitsubishi Marine Engine is provided by one of our official sales and service dealers and the SCR system is provided, serviced and warranted by the Emigreen network.

Read more about Emigreen: www.emigreen.eu



Mitsubishi Turbocharger & Engine Europe B.V.

Damsluisweg 2, 1332 EC Almere, The Netherlands
 Email: engines@mtee.eu | Tel: +31-36-538-8311
engine-genset.mhi.com

MOVE THE WORLD FORWARD  **MITSUBISHI**
HEAVY
INDUSTRIES
GROUP